

Whitmer Announces New Battery Component Manufacturing Facility in Big Rapids

October 05, 2022

FOR IMMEDIATE RELEASE

October 5, 2022

Contact: press@michigan.gov

Gov. Whitmer Announces New Battery Component Manufacturing Facility in Big Rapids, Creating 2,350 Jobs and an Investment of More than \$2.3 billion

LANSING, Mich. – As part of a series of electric vehicle battery investments made today, Governor Gretchen Whitmer joined the Michigan Economic Development Corporation in announcing Michigan Strategic Fund (MSF) support for a transformational investment by the global battery company Gotion, which has chosen to build its battery component manufacturing facility in Big Rapids.

“Gotion’s \$2.36 billion investment creating 2,350 good-paying jobs in Big Rapids is the biggest ever economic development project in Northern Michigan and will shore up our status as the global hub of mobility and electrification,” said **Governor Gretchen Whitmer**. “I am proud that Republicans and Democrats worked across the aisle to build up our economic development toolkit and empowered Michigan to compete for every project and every job. Together, we will continue winning investments in this space and become the preeminent destination for electric vehicle and mobility companies. We will work with anyone and compete with everyone to keep bringing supply chains of batteries, chips, and electric vehicles home to Michigan.”

“We are thrilled to congratulate the Gotion team on choosing Michigan as their American home for opportunity! Team Michigan continues to out-hustle and out-compete to ensure every global company considering their future expansion opportunities can see their future here in our state, just like Gotion does,” said **Quentin L. Messer, Jr., CEO of MEDC and President and Chair of the MSF Board**. “We are grateful for the support and collaboration from our multiple local partners at the city and country levels, our partners at The Right Place and Consumers Energy, in particular, and appreciate the bipartisan support of the legislature to bring these good-paying jobs and economic opportunities to our friends and neighbors both here in Big Rapids and throughout the region.”

Founded in 1998 and based in Hefei, China, [Gotion High-tech Co.](#) engages in the research and development, production, and sale of power lithium batteries in China and internationally. Its products include lithium iron phosphate materials and batteries, ternary materials and batteries, power battery packs, battery management systems, and energy storage battery packs for use in electric commercial vehicles, passenger vehicles, special vehicles, and hybrid vehicles. Gotion also offers high-voltage electrical appliances, switchgear equipment, electrical digital equipment, intelligent distribution network equipment, serialized transformers, transformers, circuit breakers, integrated charging piles, on-board chargers, and energy storage cabinets for use in thermal power, hydropower, nuclear power, wind power, metallurgy, railway, and other industries.

Gotion was incorporated in California in 2014 and was focused on research and development activities in Fremont, California as well as Cleveland, Ohio. Now, future operations, including this project, will focus on establishing production capacity for the United States.

“We are thankful to the Big Rapids community, State of Michigan and all who have supported us in getting the project to this important milestone. We are dedicated to bringing world class lithium battery production to North America and delivering high-quality products to our customers in a timely fashion. We look forward to our continued partnership to ensure a smooth launch,” said **Chuck Thelen, Vice President of Gotion Global.**

The MSF Board today approved support that will enable up to \$2.364 billion investment in Michigan by Gotion creating up to 2,350 new jobs in Big Rapids and the surrounding area, to serve increasing demand in the battery production industry. Gotion will initiate a multi-phase project in Big Rapids where it will build a battery components manufacturing facility to serve a growing customer base throughout North America and globally.

Once completed, the facility in Big Rapids is expected to produce 150,000 tons of cathode material per year, covering an area estimated to span 260 acres with plans to build two 550,000 square foot production plants along with other supporting facilities. Additionally, the project will involve the construction of two production plants specifically dedicated to producing anodes, ultimately resulting in 50,000 tons of anode material produced per year.

“We are proud to partner with Gotion, Governor Whitmer, the Right Place and MEDC to support this once-in-a-generation opportunity for Big Rapids to bring more success and prosperity for Michigan,” said **Garrick Rochow, President and CEO of Consumers Energy.** “Consumers Energy plays a pivotal role in the economic development success of this project providing a competitive electric rate to attract this investment and a unique partnership ensuring high reliability, not only for Gotion, but for the entire Big Rapids region. We are also thrilled to partner with the company to deliver on their commitment to have 100% renewable energy powering their facility which aligns with our strategic vision through our Clean Energy Plan.”

In order to secure today’s project – which Michigan won out over Texas, Georgia, Kentucky, South Carolina, Illinois and Ohio – the MSF Board approved a package of incentive support, including:

- A \$125 million Critical Industry Program performance-based grant through the SOAR Fund
- An MSF Designated Renaissance Zone estimated to be worth \$540 million
- A \$50 million Strategic Site Readiness Program performance-based grant through the SOAR Fund will be administered by The Right Place to assist with infrastructure improvements.

In addition to MSF support, both Green Charter Township and Big Rapids Charter Township anticipate approval of a PA 198 real property tax abatement. Green Charter Township, Big Rapids Charter Township, and Mecosta County have also authorized a 30-year Renaissance Zone in support of the project.

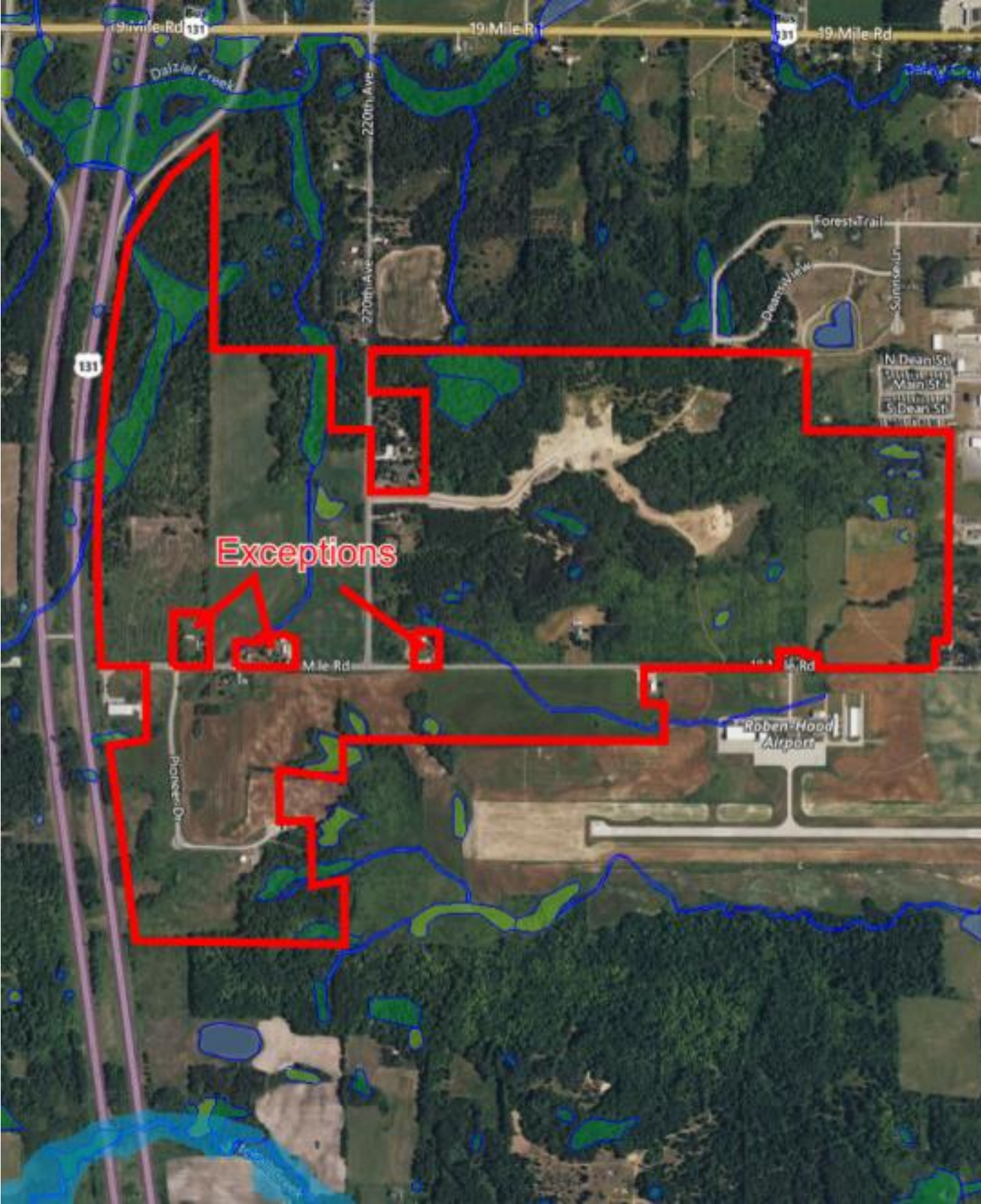
“This project has the potential to provide great jobs to multiple generations of our citizens,” said **Mecosta County Controller/Administrator Paul Bullock**. “Citizens who will not have to leave our community for this type of opportunity, but who will be able to stay, grow, and enrich our community through their presence.”

“The Right Place is honored to have played a role in bringing this transformational project to the Big Rapids area, said **Brent Case, Vice President, Business Attraction, The Right Place, Inc.** “The location and community have been prepared for an opportunity like this to utilize the infrastructure, locally trained talent pool and outstanding resources from Ferris State University. We are well on our way to positioning the region at the center of West Michigan’s growing mobility and EV sector.”

It is anticipated the influx of jobs will result in spin-off investments and redevelopment opportunities. Over \$11.5 billion in new personal income is expected to be generated by the direct, indirect, and induced jobs that this opportunity will create over 20 years.

“We are excited at the opportunity to partner with Gotion, our municipal leaders, and our economic development partners on this once-in-a-century project that will have a significant impact for both the Big Rapids region and for Ferris State University. Gotion has made it clear that Ferris State University will be a strong partner in this effort for many years to come, and we are well prepared to do so,” said **Ferris State University President Bill Pink**. “While we have not yet reached the finish line, the board approval this morning has moved us one step closer to a collaboration that will positively impact and enhance our region and state as a whole. I am excited about this opportunity to advance our region, the city of Big Rapids, and our great university!”

The Proposed Site:



Gotion FAQ revised October 25, 2022 - Source: The Right Place website

What is the project?

- Gotion North America proposes producing their battery electrode materials here, specifically the anode and cathode materials, which is the highest value-added component of new lithium-ion batteries. The anode and cathode produced in Big Rapids will support a wide array of customers, including automotive and utilities.

Who is the company?

- Gotion is a publicly traded international company and is one of the ten largest advanced battery manufacturers in the world. The company has a North American headquarters in California.

Why Big Rapids area?

- The company underwent an exhaustive due diligence process, having carefully considered over 40 locations across the United States for a domestic manufacturing facility and determined that West Michigan, and the Big Rapids site is an ideal place to grow its U.S. operations. The company recognized the area's strong work ethic and partnership opportunities with Ferris State University's world-class industrial tech programs as key factors in its decision-making process. The site under consideration has long been held as a place for industrial investment by the community. Assembled and developed nearly 25 years ago, the community has been prepared for an opportunity like this to materialize to utilize the infrastructure, airport, access to freeways and locally trained talent pool. Sites of this nature are in short supply across the country.

How are these batteries manufactured?

- Li-ion batteries are found in all kinds of applications today, ranging from our cell phones to drones to lawn mowers to now cars. The production of electrode entails coating very thin rolls of metal and cutting and notching to size (VIDEO).

Is the property being sold to the company?

- Yes. An appraisal of the Industrial Park property will be conducted to establish the land price. In the coming weeks, a Development Agreement will be prepared and advanced to the Township Board for consideration. This Development Agreement will include the real estate transaction details.

Will there be any significant roadway changes to accommodate increased traffic in that area?

- The site was chosen for its easy access to transportation routes, which will greatly minimize traffic issues in the broader community. Upgraded intersections and traffic signals are planned for the area.

Who will actually own the land that the company will occupy?

- The company will own the land. Who covers all the costs associated with the infrastructure improvements that will be made for this company? The state incentive offer provides funding for infrastructure improvements.

Will there be a ripple effect on the local economy?

- The new jobs will increase the number of competitive job opportunities in the region, which could increase the number of people who commute to the Big Rapids area. That could lead to new residents who frequent stores, restaurants and begin using the school district.

What is a Renaissance Zone? How will this benefit the community?

- The Renaissance Zone incentive was first established as law in 1996, allowing communities to apply for designated areas that would be nearly tax-free. No state or local income or property taxes are levied on the new investment, excluding the land value (remains taxed) and any bond millage (school bonds, for example). Big Rapids Township successfully applied for a Renaissance Zone for the Industrial Park, which expired three years ago. Today, communities must seek state approval and generally have a large-scale project in order to obtain a new Renaissance Zone. For this project, each township (Big Rapids Charter Township and Green Charter Township) along with the County voted to support of the Renaissance Zone. The current tax collections on the site will be largely unchanged, as the raw land will continue to be taxed as it is today. In addition, the school bond millage will apply to this new investment, which will result in a rapid elimination of that debt millage on the citizens. Any future bond issues will also enjoy the benefits of this new tax base, as debt millage is not waived via Renaissance Zones. A project of this nature will naturally result in additional growth and investment outside the Renaissance Zone area, helping to grow the local tax base and providing additional jobs and services for area residents to enjoy. The infrastructure improvements that will be made for this commercial property will also benefit area residents and commercial customers.

Why is there such a large incentive package?

- The automotive industry, which has been the foundation of the Michigan economy for over 100 years, is undergoing an unprecedented transformation as the industry transitions from the internal combustion engine to electric propulsion systems. For Michigan to continue to be a global leader in the automotive industry, it is imperative that the current wave of investment in EV-related projects is welcomed to this state. With nearly 1,000,000 people working in the automotive industry, including over 400,000 in West Michigan, the state has been aggressive in pursuing these large-scale EV projects to help secure the state's economic future.

Are there any local examples of businesses benefiting from a Ren Zone opportunity?

- Big Rapids Charter Township has history with Renaissance Zones, having put in place a Zone for the Industrial Park before expiring after 15 years. No companies chose to locate in the Industrial Park during that time.

Where will the workers come from?

- Projects of this scale will often hire a blend of local talent and recruit new workers to the region. The area has long been a hub for employment, especially in the manufacturing sector, pulling

people from as far as 60 miles away. These new jobs provide people greater opportunity to choose a career that keeps them closer to home.

What kinds of jobs will be offered at this location?

- A full spectrum of job opportunities will be offered at this site, ranging from production, engineering, maintenance, and administrative. The company is proposing to develop the site in several phases over the next ten years, so hiring will continue well beyond 2024.

What will salary and benefits look like?

- As part of its evaluation in providing incentives to prospective company's looking to locate in Michigan, the Michigan Economic Development Corporation requires that job wages be competitive. The final wage and benefit levels will be determined closer to when the hiring process begins at scale, likely in the fourth quarter of 2023 or early in the first quarter of 2024.

How does this company expect to attract 2,350 people?

- The company is proposing to develop the site in phases spanning six to ten years. Gotion will build its workforce as the phases progress through both attraction and training of local talent.

Will there be any workforce training?

- There is an opportunity to develop a pipeline of talent for this industry and company, including area high schools, Ferris State University, Westshore Community College, Montcalm Community College, Grand Rapids Community College, and other educational institutions. These expanded training programs will supply newly skilled workers to the entire area, some of which will choose to work at this new facility and some choosing to work at existing area employers. The size of this new development provides the impetus for the area schools to expand their capacity, which will serve all employers. The plan is for area K12 and higher education programs to provide skills training that would be suitable for jobs at this company, which will allow area youth to stay and thrive in the region instead of leaving. Similar training certification programs will be made available for those adults already in the workforce or seeking to enter the workforce.

Will this be a 24/7 operation?

- The company will operate as required to meet the needs of their customers, which could be as much as 24/7 operation. Will there be traffic concerns? It's not expected that there will be heavy traffic patterns that would cause concern. The location is well-suited to accommodate traffic in that area. Adjustments, such as turn lanes and signals, will be developed, as necessary.

The following information is the result of Township Boards research:

What is an ESG rating?

It is an objective evaluation of a company, a fund, or a security’s performance measured against Environmental, Social, and Governance (ESG) criteria. The ratings below illustrate Gotion High-tech’s rating amongst other organizations in its business sector:

ESG Risk Rating			
Gotion High-tech Co., Ltd	LG Chem Ltd.	Hitachi Energy India Ltd.	Samsung SDI Co., Ltd.
ESG Risk Rating	ESG Risk Rating	ESG Risk Rating	ESG Risk Rating
32.7 High	27.4 Medium	17.3 Low	20.1 Medium
EXPOSURE	EXPOSURE	EXPOSURE	EXPOSURE
Medium	Medium	Low	Medium
MANAGEMENT	MANAGEMENT	MANAGEMENT	MANAGEMENT
Weak	Average	Weak	Average

The proposal presented to the Michigan Strategic Fund October, 5, 2022 for approval:

[MFS Submission](#) When you reach the site, click on the October 5 Special Meeting link. The Gotion proposal is detailed on pages 18 through 44.

CIP Considerations for Project Elephant (the Q & As here are similar to those in the MBRS & SSRP Applications)

The fund shall consider and document at a minimum all of the following criteria to the extent reasonably applicable as reasonably determined by the fund board to the type of project proposed before entering into a written agreement for a qualified investment:

- The importance of the project to the community in which it is located. Along with Ferris State University, this proposed renewable energy facility project of Gotion, Inc. because of the size of its anticipated private investments in land, buildings and machinery & equipment and the large number high-tech, high paying jobs to be created would be the base of the local (as well as regional) economy.
- If the project will act as a catalyst for additional revitalization of the community in which it is located and this state. This project will provide indirect benefits to the area in the form of creating new businesses and job creation in other economic sectors like construction, services, retail & wholesale trades and FIRE. Further, several stalled housing projects will get a jumpstart and additional housing projects are anticipated.

- The amount of local community and financial support for the project. Mecosta County and the two Townships will provide real property tax exemptions for 30 years through the RERZ.
- The applicant's financial need for a qualified investment from the critical industry program. The Company demonstrated its need for assistance prior to the MEDC's Offer Letter dated August 5, 2022. (A new Offer Letter has been provided to the Company reflecting the reduction in private sector investment from \$ 3.806B to \$ 2.364B.) Big Rapids Charter Township and Green Charter Township are similar sized communities with 2020 populations of 3,917 and 3,219 respectively. They have limited financial resources. Mecosta County's 2020 population was 39,714. Between 2010 and 2020, the County recorded a population loss of 7.21 percent. The City of Big Rapids is the county seat with a 2020 population of 8,948.
- The extent of reuse of vacant buildings, public or private, reuse of historic resources, and redevelopment of blighted property. There are no vacant buildings on the 523.38-acre site. One of the three residential units on the site is over 50 years old, and therefore, qualifies as being a historic structure. The only distressed area in Mecosta County is the City of Big Rapids, no doubt due to the age of its housing stock. Localized areas of blight may exist in older parts of the City.
- Creation or retention of qualified jobs as a result of a technological shift in product or production at the project location and within this state. There are presently no jobs on the "greenfield" site. Up to 2,350 new jobs are pledged to be created by the end of the 4th phase of development of the new facility. Gotion, Inc. anticipates the hiring to start in June 2023, and be completed by the end of 2031.
- The level of other public funds including, but not limited to, the appropriation of federal or state funds and any federal or state tax credits. No federal assistance is supporting this proposed new renewable energy facility.
- The level of any private funds, investments, or contributions into the project including, but not limited to, the qualified business's own investments in the project. Gotion, Inc. will be investing up to \$ 2.364B in this new venture over four phases of development during the span of six years.
- Whether and how the project is financially and economically sound. Due diligence is required on the part of Gotion, Inc. moving forward with this venture as well as on the part of the State of Michigan in investing public funds into the project. Gotion is one of the ten largest battery manufacturers in the world, trading on Sweden's stock exchange and raising nearly \$700M USD in July. Further, Volkswagen is the largest shareholder.
- Whether and how the project promotes sustainable development.

This proposed industrial development project provides for a long-term usage of the land. The land south of 18 Mile Road has been zoned for industrial use for decades. Big Rapids Charter Township owns the Big Rapids Airport Industrial Park. Most of the industrial park falls within the Renaissance Zone.

- Whether and how the project involves the rehabilitation of a historic resource.
On three of the 19 parcels of land which comprise the site are located residential structures. According to the BS & A Property Record Information, one of these houses was built in 1892.
- Whether and how the project addresses areawide redevelopment and the overall economic benefit to the existing supply chain.
The large investment of public funds into infrastructure (approximately \$ 14 million), the large private investment in the new facility (\$ 2.364 B) and the high wages paid by Gotion, Inc. will spur areawide redevelopment as well as new private sector development. The average annual wage of the overall operation is expected to be \$ 61,995.
- The level and extent of environmental contamination.
All development changes the nature of the land. Through planning, monitoring and the enforcement of regulations, hopefully, environmental contamination can be kept to a minimum or none at all.
- Whether and how the project will compete with or affect existing Michigan businesses within the same industry.
The closest advanced battery manufacturer is located in the City of Holland, Allegan County, Michigan. They may serve different markets.
- Whether and how the project's proximity to rail and utility will impact performance of the project and maximize energy and logistics needs in the community in which it is located and in this state.
This site is well served by Michigan's highway system, being located between four-lane U.S. 131 and the Business Route 131 through the City of Big Rapids. An interchange with the Highway (Exit 142) is located at 19 Mile Road. There is a State-owned rail line traversing Mecosta County north/south generally following along the Muskegon River, which is located east of the 523.38-acre site. The site also sits near a Consumers Energy high voltage service area, providing quality reliable service. Below the southeast corner of the Ren Zone accessed from 18 Mile Road is the general aviation Roben-Hood Airport.
- The risk of obsolescence of the project, products, and investments in the future.
The renewable energy industry is a growth industry. Research & development and innovation are central to a renewable energy facility. Gotion, Inc. aims to innovate and create the next generation of battery technology.
- The overall return on investment to this state.

The return on investment to Michigan will include indirect investments & job creation in other economic sectors. In addition, this will spark growth and prosperity in a subregion of the State that has suffered sustained economic losses for two decades.

- Whether and how the project addresses food supply challenges. There are none.
- Any other additional criteria approved by the board that are specific to each individual project and are consistent with the purpose of this program.

It is good to see a major industrial prospect locate in a northern Michigan community where the company's investments & job creation can substantially raise the standard of living. And, in turn, the community & residents can support a highly valued project which provides them with identity in the State, nation and possibly the world.

The



signed offer letter:

**MICHIGAN ECONOMIC
DEVELOPMENT CORPORATION**

PROJECT INFORMATION

Provided by Project Elephant

of Jobs:

Up to 2,350

Capital Investment

**Up to
\$2,364,000,000**

Total Incentive

**Up to
\$1,143,915,908**

WHY MICHIGAN

#1

in the nation for concentration of engineers

#8

in the nation with a skilled trades workforce of more than 250,000

Top 15

Tax Foundation's
2021 State Business
Tax Climate Index

September 23, 2022

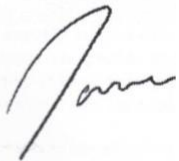
Dear Chuck and

Thank you for giving the opportunity to support your success in Michigan by offering an innovative and competitive workforce, an affordable cost of doing business and a globally connected location. Additionally, when the workday is over, we have the playground of Pure Michigan in our backyard offering endless opportunities to explore.

Based on the information you have provided, we are pleased to offer a package of state, local, and utility incentives totaling \$1,143,915,908. Please see the attached Incentive Matrix on the following page for a more detailed description of the incentive being offered.

By leveraging Michigan's robust talent pool, business-friendly climate and strategically connected location, Project Elephant has access to everything it needs to grow and thrive here in Michigan. We look forward to working with you to help make Michigan your home. If you have any questions, please contact Samuel Sedlecky at sedleckys@michigan.org or (517) 643-7712.

Sincerely,



Joshua E. Hundt
Executive Vice President

Attachments

cc: Samuel Sedlecky
Jeremy Webb
Brent Casper

Dear Chuck and the Project Elephant team,

Thank you for giving the Michigan Economic Development Corporation (MEDC) the opportunity to host Project Elephant in Big Rapids. We stand ready to support your success in Michigan by offering an innovative and competitive workforce, an affordable cost of doing business and a globally connected location. Additionally, when the workday is over, we have the playground of Pure Michigan in our backyard offering endless opportunities to explore.

Based on the information you have provided, we are pleased to offer a package of state, local, and utility incentives totaling \$1,143,915,908. Please see the attached Incentive Matrix on the following page for a more detailed description of the incentive being offered.

By leveraging Michigan's robust talent pool, business-friendly climate and strategically connected location,

Project Elephant has access to everything it needs to grow and thrive here in Michigan. We look forward to working with you to help make Michigan your home. If you have any questions, please contact Samuel Sedlecky at sedleckys@michigan.org or (517) 643-7712.

Executive Vice President, Chief Projects Officer

Samuel Sedlecky, MEDC
Jeremy Webb, MEDC

Brent Case, The Right Place

300 North Washington Square

Lansing, MI 48913 t 888.522.0103

michiganbusiness.org

1-4

Project Assumptions	Phase
Total Investment	2.3" OCC CCC
Real	l.xzocc.ccc
Personal	
Total Jobs/Average Wage (\$61,995)	
Project Elephant - Incentive Summary	Phase 1-4
Job Creation and Investment Incentives•	
Infrastructure Support & Land Assembly*	
Tailored Talent Solutions	
Cost Mitigation	
Total	

•Availability and amounts of this funding category are contingent upon legislative approval

Project Elephant - Incentive Matrix	Phase 1 - 4
Job Creation and Investment Incentives	
Michigan Critical Industry Program Grant*	
Infrastructure Support & Land Assembly	
Michigan Site Readiness Program Grant* •	
Michigan Department of Transportation - Economic Development Fund - Category A	TBD
Western Department of Transportation - Freight Economic Development Program	TBD
Land Acquisition Savings	
CMS - Signing Bonus	10,000,000
Consumers Energy - Electric Construction Allowance	25,000,000
Consumers Energy - Electric Vehicle Incentive - S DCFCs	350,000
Consumers Energy - Electric Vehicle Incentive - 20 DCFCs	
Consumers Energy - Energy Engineer Service	750,000
Consumers Energy - PowerMI Fleet Concierge Analysis	30,000
Consumers Energy - Energy Efficiency Incentives	
ITC - Electric Construction Investment	14,000,000
Tailored Talent Solutions	
Michigan Works!	
Michigan New Jobs Training Program	TBD
Cost Mitigation	
MSF Designated Renaissance Zone Abatement (30 years Real and	

Real Property Tax Savings	
Personal Property Tax Savings	271,857,240
State Essential Services Assessment Abatement	
Real Propre Tax Abatement PA 198 of 1974)	17,852,882
Sales and Use Tax Exemption	
Pure Michigan Business Connect	700,000
Total	1,143,915,908

*A performance-based, discretionary incentive that provides cash grant to new md business on the basis of job creation and/or qualified investment. Disbursement timing will discussed and sched'-.&d to terms mth the client but typically begins the yearfollowing commencement of hiring. In the e•ænt funds are to— creot&t. terms hclude clawback provisions ifjob creation requirements are not met The Emphyment into Critical Industry Program for all Phases.

* *Funds may be usedfor public infrastructure, transfer of ownershipfr the BG Ropds Tom-sp. W'cter *stem, ard End acquisition.

Amount may vary based on actual need not to exceed 550M. In the event. intenQ•d uses eueed remaining balance can be used by the Companyfor site development costs.

***The Renaissance Zone may include a Payment in Lku Taxes for emergency serkes needed to servke the site.

Acceptance of this incentive package is subject to a business integrity revÉw, check process. ond other general due dlilgence as required, the results of which are satisfactory to the MEDC the Office # the Chef Compbance Offcer, and related authorities. Proposed incentives are dependent on availability offunds each rar through the legislative budget process. Incentöæ amounts are contingent upon the ability of the project to meet program requirements and are subject to an application revkw and approval process. Proposed tax abatements will vary based on actual site selected.

To accept this offer please sign, date and return this letter to the Michigan Economic Development Corporation before September 23, 2022. upon acceptance, this offer will remain active for 90 days while due diligence is conducted, and the Michigan Strategic Fund Board considers the recommendation for incentive support. After September 23, 2022, the proposal may be subject to renegotiation.

The undersigned agrees to accept the above incentives and services proposed by the MEDC subject to the conditions stated in this letter.

7Ze..Zz,v

Project Elephant Company Representative

September 26, 2022

Date

Infrastructure costs:

Project: Big Rapids Elephant

Project No: NBO

Date: 5/19/2022

ASM

Construction Year: 2023

Engineers Estimate of Probable Project Cost - Planning Level Estimate

LINE NO.	ITEM	UNIT	ESTIMATED QUANTITY	UNIT PRICE	TOTAL
----------	------	------	--------------------	------------	-------

1	Sanitary Sewer		3500	150.00	
2	8" Sanitary Sewer, D2680		10	4,500.00	
3	4' Dia Sanitary Manhole		1	250,000.00	
4	Sewer Lift Station				\$525,000
4	Green Township Pump Station Upgrade	each			\$45,000
	Water	LS	8700	150.00	\$250,000
4	12" Water Main, Class 53	LS	1		\$900,900
5	Elevated Storage Tank, 250,000 gallons			3,000.00	\$1,305,000
6	12" Valve and box		10	5,000.00	\$2,500,000
7	5 1/2" Hydrant and fittings	LS	18		\$30,000
	Roads	each			\$90,000
8	19 Mile Road (west of 131)	each			\$150,
9	19 Mile Road (East of 131)				\$500,
10	131/19 mile intersection Traffic Signal	LS			\$200,
11	BR131(Northland Drive)/19 mile intersection Traffic Signal	LS			\$200,
12	BR131 (Northland Drive)/18 mile intersection Traffic Signal	LS			\$200,
13	220th Ave. road widening 5,280' ,2-12' lanes, center 11' lane, 3' shoulders	LS			\$900,000
14	18 Mile Road (810(Y 2-12' lanes, 3' shoulder)	LS			\$1,000,
15	Northland Drive	LS			\$400,000
16		LS			
			Subtotal = add 35%		\$9,195,900
			contingency=		\$1,169,590
			Design Engineering 10%		\$60,000
			Geotechnical =		\$1,169,590
			Construction Administration and Inspections 10%		\$50,000
			Permits:		
ESTIMATED TOTAL PROJECT COST					\$14,145,080